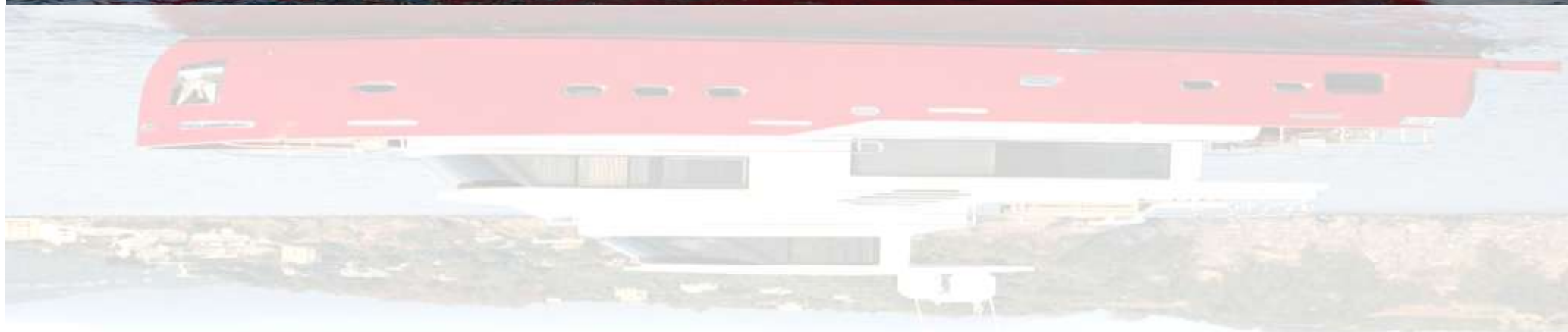


# MARCO POLO Navetta 70 2015



 <p>YACHT &amp; PROPERTY INTERNATIONAL</p>	<p><b>YACHT PROPERTY INTERNATIONAL</b></p> <p>Gibraltar- Balearic Islands - Riviera- Malta</p> <p><a href="mailto:info@yacht-property-international.com">INFO@YACHT-PROPERTY-INTERNATIONAL.COM</a> +34 63 87 55 55 6</p>
---	--







Presented by [Info@yacht-property-international.com](mailto:Info@yacht-property-international.com)



Presented by [Info@yacht-property-international.com](mailto:Info@yacht-property-international.com)







Presented by [Info@yacht-property-international.com](mailto:Info@yacht-property-international.com)





Presented by [Info@yacht-property-international.com](mailto:Info@yacht-property-international.com)





Presented by [Info@yacht-property-international.com](mailto:Info@yacht-property-international.com)





Presented by [Info@yacht-property-international.com](mailto:Info@yacht-property-international.com)



Presented by [info@yacht-property-international.com](mailto:info@yacht-property-international.com)





Presented by Info@yacht-property-international.com



Presented by [Info@yacht-property-international.com](mailto:Info@yacht-property-international.com)







Presented by [Info@yacht-property-international.com](mailto:Info@yacht-property-international.com)





Presented by [Info@yacht-property-international.com](mailto:Info@yacht-property-international.com)



Presented by [Info@yacht-property-international.com](mailto:Info@yacht-property-international.com)







Presented by [Info@yacht-property-international.com](mailto:Info@yacht-property-international.com)





Presented by [Info@yacht-property-international.com](mailto:Info@yacht-property-international.com)



Presented by [Info@yacht-property-international.com](mailto:Info@yacht-property-international.com)





Presented by [Info@yacht-property-international.com](mailto:Info@yacht-property-international.com)



Presented by [Info@yacht-property-international.com](mailto:Info@yacht-property-international.com)

DI CARO





Presented by [Info@yacht-property-international.com](mailto:Info@yacht-property-international.com)



Presented by [Info@yacht-property-international.com](mailto:Info@yacht-property-international.com)





Presented by [Info@yacht-property-international.com](mailto:Info@yacht-property-international.com)



Presented by [Info@yacht-property-international.com](mailto:Info@yacht-property-international.com)







Presented by [Info@yacht-property-international.com](mailto:Info@yacht-property-international.com)





Presented by [Info@yacht-property-international.com](mailto:Info@yacht-property-international.com)







Presented by [Info@yacht-property-international.com](mailto:Info@yacht-property-international.com)



Presented by [Info@yacht-property-international.com](mailto:Info@yacht-property-international.com)



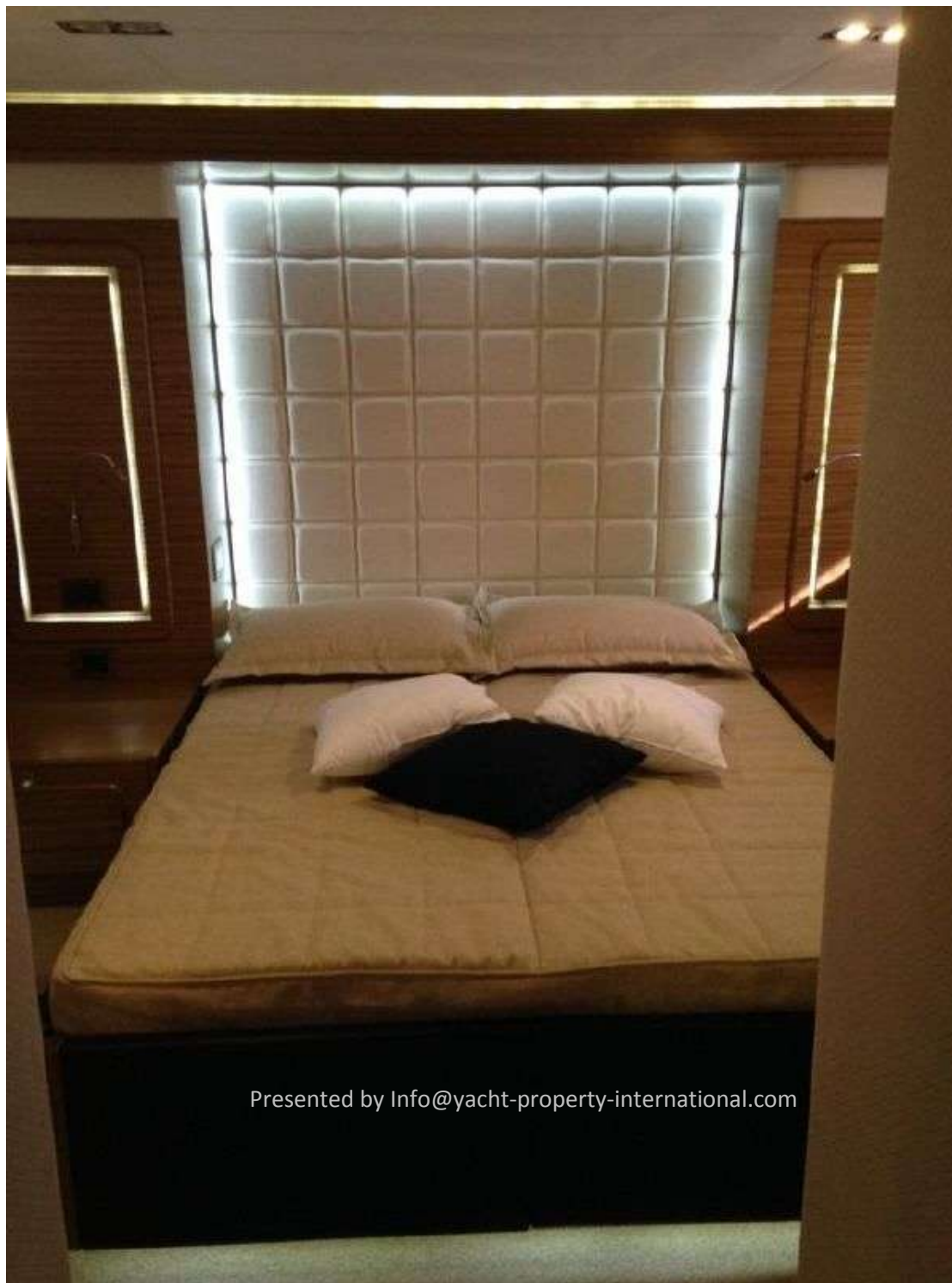
Presented by [Info@yacht-property-international.com](mailto:Info@yacht-property-international.com)





Presented by [Info@yacht-property-international.com](mailto:Info@yacht-property-international.com)





Presented by [Info@yacht-property-international.com](mailto:Info@yacht-property-international.com)



Presented by [Info@yacht-property-international.com](mailto:Info@yacht-property-international.com)





Presented by [Info@yacht-property-international.com](mailto:Info@yacht-property-international.com)



Presented by [Info@yacht-property-international.com](mailto:Info@yacht-property-international.com)





Presented by [Info@yacht-property-international.com](mailto:Info@yacht-property-international.com)



Presented by [Info@yacht-property-international.com](mailto:Info@yacht-property-international.com)







Presented by [Info@yacht-property-international.com](mailto:Info@yacht-property-international.com)





Presented by [Intro-yacht-property-international.com](http://intro-yacht-property-international.com)



Presented by [Info@yacht-property-international.com](mailto:Info@yacht-property-international.com)





Presented by [Info@yacht-property-international.com](mailto:Info@yacht-property-international.com)



Presented by [Info@yacht-property-international.com](mailto:Info@yacht-property-international.com)





Presented by [Info@yacht-property-international.com](mailto:Info@yacht-property-international.com)



Presented by [Info@yacht-property-international.com](mailto:Info@yacht-property-international.com)







Presented by [Info@yacht-property-international.com](mailto:Info@yacht-property-international.com)





Presented by Info@yacht-property-international.com



Presented by [Info@yacht-property-international.com](mailto:Info@yacht-property-international.com)





Presented by [Info@yacht-property-international.com](mailto:Info@yacht-property-international.com)







Presented by [Info@yacht-property-international.com](mailto:Info@yacht-property-international.com)



Presented by [Info@yacht-property-international.com](mailto:Info@yacht-property-international.com)





Presented by [Info@yacht-property-international.com](mailto:Info@yacht-property-international.com)



Presented by [Info@yacht-property-international.com](mailto:Info@yacht-property-international.com)







Presented by Info@yacht-property-international.com

DI





Presented by [Info@yacht-property-international.com](mailto:Info@yacht-property-international.com)



Presented by [Info@yacht-property-international.com](mailto:Info@yacht-property-international.com)





Presented by [info@yacht-property-international.com](mailto:info@yacht-property-international.com)



Presented by [Info@yacht-property-international.com](mailto:Info@yacht-property-international.com)





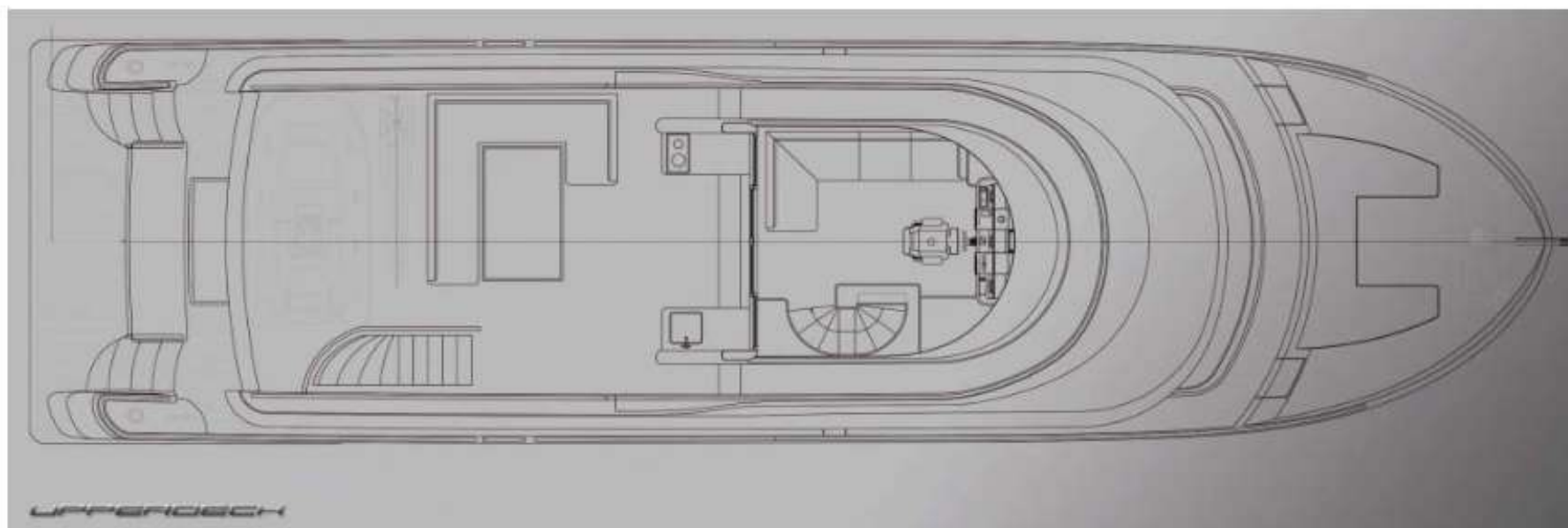
Presented by [Info@yacht-property-international.com](mailto:Info@yacht-property-international.com)



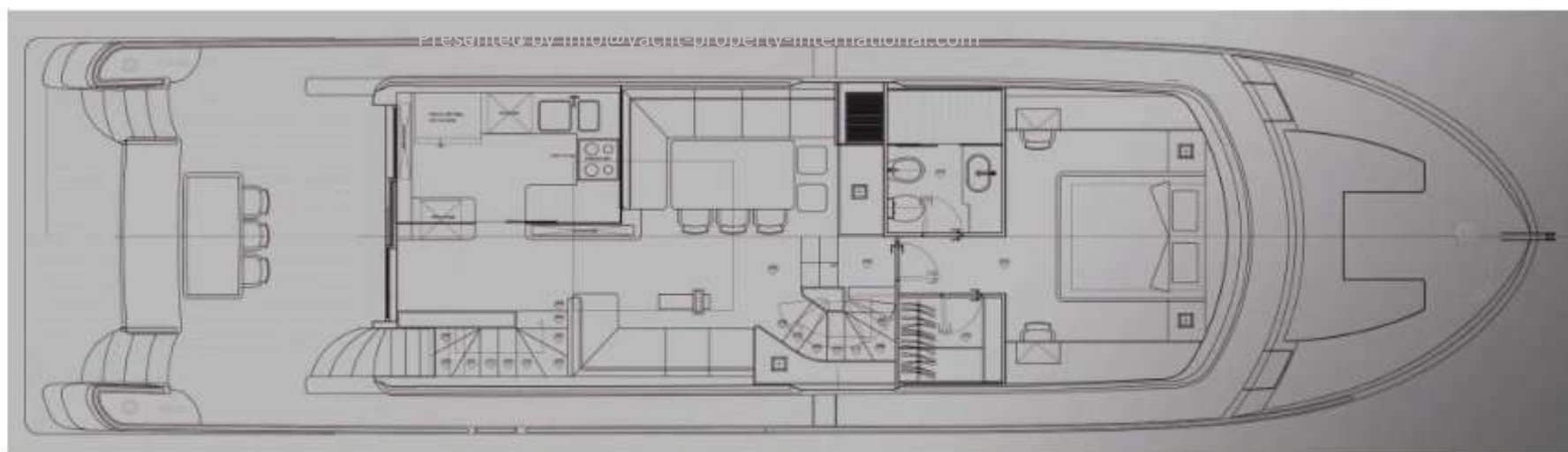
Presented by [Info@yacht-property-international.com](mailto:Info@yacht-property-international.com)



## Ponte superiore – Upper deck

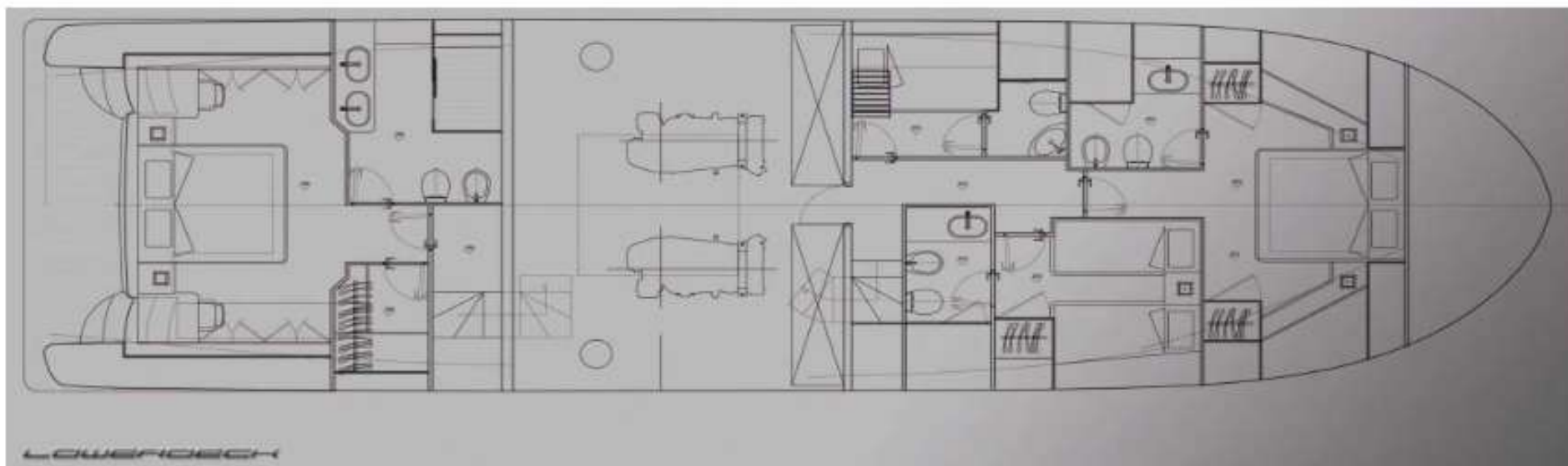


## Ponte principale – Main deck



## Ponte inferiore – Lower deck

Presented by [Info@yacht-property-international.com](mailto:Info@yacht-property-international.com)





# MARCO POLO Navetta 70 2015

**Brand new navetta semi displacement**, with double sea keeper **stabilizers**. Fully loaded and red hull shining.

**2 and half decks**, with bow private dining/cocktail area.

**4 cabins + 4 heads + crew quarter**; with one panoramic stateroom on the main deck.

## top quality components

Lunghezza F.T.	<i>Length overall</i>	Mt	22,10
Lunghezza scafo	<i>Hull lenght</i>	Mt	20,85
Lunghezza al galleggiamento	<i>Waterline lenght</i>	Mt	19,63
Larghezza massima	<i>Beam overall</i>	Mt	5,75
Immersione	<i>Draft</i>	Mt	1,81
Dislocamento vuoto	<i>Displacement</i>	Kg	53000
Dislocamento a pieno carico	<i>Displacement (at full load)</i>	Kg	62000
Serbatoio carburante	<i>Fuel capacity</i>	l.	6600
Serbatoio acqua	<i>Water capacity</i>	l.	1800
Numero passeggeri	<i>Number of passengers</i>	n.	16
Posti letto ospiti	<i>Berths</i>	n.	8
Posti letto equipaggio	<i>Crew berths</i>	n.	2
Velocità massima a medio carico	<i>Maximum speed (at half load)</i>	Kn.	22
Velocità di crociera a medio carico	<i>Cruising speed (at half load)</i>	Kn.	18
Materiale di costruzione	<i>Building materials</i>	VTR	
Motorizzazione	<i>Engines</i>	Volvo Penta D13 2X900CV	

N.1 generatore ONAN 20 Kw	N.1 ONAN generator 20 Kw
N.1 generatore ONAN 11 Kw	N.1 ONAN generator 11 Kw
Impianto di climatizzazione BTU 96.000	Air conditioning system BTU 96.000
Elica di prua 30 HP	Bow thruster 30 HP
Elica di poppa 25 HP	Stern thruster 25 HP
Impianto lavaggio catena	Chain washing system
N.2 verricelli salpancora idraulici 3500W reversibili	N.2 anchor reversible windlasses 3500W
Contametri catena	Chaincounter
Piattaforma up & down in teak	Up & Down bathing platform in teak
Filtri Racor doppi per motori,	Double Racor filters for engines
filtro racor per generatore,	racor filter for generator
Display ST290 system pack	Display ST290 system pack
Elettronica Raymarine di navigazione completa di n.3	Raymarine navigation instruments, n.3 15" multifunction
monitor touch screen multifunzione 15"	touch screen monitors
Stazione vento e indicatore di barra	Wind station and rudder angle indicator,
Pilota automatico ST 6002,	Autopilot ST6002
VHF Ray 240 E, AIS	VHF Ray 240 and AIS
Antenna radar difgitale 4' 64nm	Digital radar antenna 4' 64nm
Videocamera in sala macchine e pozzetto	Video camera in engine room and cockpit
Impianto antincendio automatico	Automatic fire fighting system
Cuscineria prendisole a prua	Sunbathing cushions at bow
Tavolo esterno	External table
Doccia sul fly	Shower on the flybridge
Presa acqua da banchina	Shore water plug
Camminamenti laterali e pavimento pozzetto in teak	Teak laid side decks and cockpit floor
Passerella elettroidraulica telescopica a scomparsa	Electro-hydraulic retractable gangway
Finestrature panoramiche apribili in cabina VIP	Electrical opening windows in VIP cabin
Finestrature elettriche apribili nella wheel-house	Electrical opening windows in the wheel-house
N.2 portine di accesso laterale	N.2 side boarding gates
Top cucina e bagni in marmo	Galley and head tops in marble
Bidet nei bagni armature, vip e ospiti	Bidet in owner, Vip and guest head
Luci segnapasso gradini interni ed esterni	Courtesy lights on internal and external stairs
Luci sommerse	Underwater lights
Cabina equipaggio con 2 letti e accesso indipendente	Crew cabin with n.2 berths and independent access
Lavastoviglie in cucina	Dishwasher in galley
Frigorifero con congelatore separato	Refrigerator with separated freezer
Forno elettrico	Electric stove
Cantinetta refrigerata in salone	Wine-cooler in saloon
Lavasciuga biancheria	Washer-dryer
Pavimento in legno in salone, cucina, dinette e posto guida	Wooden floor in salon, galley, dinette & wheel-house
Mobile cucina con sistema Sali-scendi	Galley furniture with hi-lo system
Impianto TV satellitare con TV LED nelle cabine e in salone	SAT TV system with TV in the cabins and salon
Lettore CD e DVD in tutte le cabine	CD and DVD players in every cabin
Impianto home theater in salone, cabina armature e VIP	Home theater in saloon, owner cabin and VIP cabin
Set coperture esterne	Set of external covers
Tasporto, allestimento, varo e collaudo	Transport, launching and rigging
Dotazioni di sicurezza per 16 persone per navigazione	Safety equipment for 16 persons for navigation over 50
oltre 50 miglia dalla costa	miles from the coast



Listino accessori extra

--

Stabilatory Seakeepers 7000

Stabilizers Sea keepers 7000

150 000€

Desalinizzatore 180 l/h

Watermaker 180 lt/h

17.500,00

Impianto di comunicazione satellitare

SAT communication system

16.800,00

Gruetta e selle tender su fly

Crane and craddles on flybridge

22.500,00

Verniciatura scafo

Hull painting

35.000,00

Yacht Controller

Yacht controller

7.000,00

Pavimento flybridge in teak

Flybridge floor in teak

18.000,00

Fabbricatore di ghiaccio sul fly

Ice-maker on flybridge

2.300,00

The determined spirit of a classic, sturdy and solid, safe and comfortable ship, reinterpreted in a modern way with bright colours and lines that seem to come straight out of a high-fashion designer's studio. Excellent performances and technical equipment and an upper deck that resembles a real outdoor playground. No more long, boring voyages forced into tight spaces, but sun and open air spent on a comfortable panoramic bridge, both at sea and at anchor, a space where privacy is guaranteed even when berthed in the marina. Marcopolo 70 is the new proposal from Marcopolo Yachts, whose staff is already well known in the nautical field.

## EXTERIORS

The imposing lines, necessary for a boat measuring over twenty-two meters, are softened by simple sleek forms and matching colours, by large side windows and a beautiful upper deck dedicated entirely to outdoor activities. The layout includes three decks, with a command bridge positioned on the upper one.

## INTERIORS

The forward part of the main deck is dedicated to the VIP cabin. Space and light, in this suite, are unbeatable thanks to the large front window and openable side windows, all surrounded by tasteful finishes. The furnishings include a central double bed, side cabinets, a comfortable bathroom and spacious walk-in closet. Instead, the central part of the main deck houses the saloon, whose large windows create an environment in close contact with the sea. Separate kitchen, but visible, a large convivial sofa and table for eight to ten people. A large access door leads to the aft cockpit, open on the sides and protected by the upper deck. The lower deck is dedicated to the sleeping area and has an original layout. The central part of the hull houses the engine room, which in this way acts as a divider between the stern cabin and bow cabins.

At the stern is the master cabin with a king-size bed surrounded by large windows. Once again in this case, the cabin has large cabinets and deep, capacious drawers. The master's quarters, independent and separate to guarantee maximum privacy, are completed by a comfortable walk-in closet and fully equipped bathroom. The forward part has two double cabins for guests, one with a double bed and one with twin beds, both with their own private bathroom. This area also has a crew cabin with two bunk beds and private bathroom. An independent side door allows the crew to access the cabin from the outside. The wheelhouse is a real command bridge, fully air conditioned, it dominates the surrounding area in all directions.

## ENGINES

In terms of engines, the shipyard has made an optimal choice by focusing on new Volvo Penta D13B-H MP engines, commonly known as D13. These are modern 12.7-litre inline six cylinder engines, equipped with high pressure injector pump, four valves per cylinder and twin turbine. The power output is 900 horses, which means excellent performance and consumption. The speed increases linearly with respect to the engine revs, confirming that the hull, propulsion and transmission are well tuned. At 1,000 rpm, it already runs at over 10 knots, with fuel consumption around 35 litres/hour. At 1,500 rpm it increases to 13.6 knots (consumption of 110 litres/hour), while at 2,000 rpm it travels at a comfortable speed of 18 knots, consuming around 220 litres of fuel per hour, a good value in relation to the length and tonnage of the vessel. Considering that 6,600 litres of fuel is available, an autonomy of over 540 nautical miles is ensured at these speeds. The maximum speed recorded was 23.6 knots at a rather contained speed of 2,360 rpm, coinciding with the maximum speed declared by the manufacturer.



## ***ELECTRIC***

*12V - 24V -220V - Air Conditioning - Heating system - Generator 2 x Onan 13 +19 Kw*

## ***EQUIPMENT***

*GPS/Plotter Raymarine G-Series - Autopilot Raymarine - Radar Raymarine - ECO Raymarine E240*

## ***ACCESSORIES***

*Bow thruster - Stern thruster - Bathing ladder - Gallery 4 fire - Bow sun cushion - Cushions - Fridge - Freezer - Oven - Microwave - Washing machine - DVD - Stereo sound system - Sat tv system - TV n° 7 - Chain counter - Shore water plug - Stern mooring winch - Gangway - CD player - Waste holding tank - Platform up/down - Battery charger - Fridge on fly + sink - Teak platform - Teak cockpit - Teak sideways - Seakeeoeer stabylizer NR2 - Mastervolt chargers - Red hull - Bose sound system - TV up/down for cockpit area - Main decl wooden floor + all heads - Double anchor.*

*We remember you that all our informations are confidential as that your informations which you send us are confidential, and that is agreed that as we have presented you this yacht MARCO POLO Navetta 70 2015 , the sale , if it 's happen, will be done by YACHT & PROPERTY International*

### **Disclaimer**

The Company offers the details of this vessel in good faith but cannot guarantee or warrant the accuracy of this information nor warrant the condition of the vessel. A buyer should instruct his agents, or his surveyors, to investigate such details as the buyer desires validated. This vessel is offered subject to prior sale, price change, or withdrawal without notice

